

SPIROX SP2500

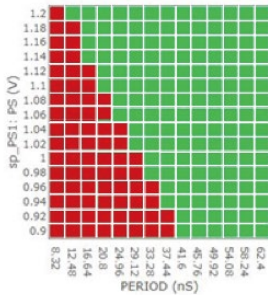
SoC Test System

Spirox's 250MHz SoC tester provides a flexible and scalable architecture, which can meet the test requirements of various digital/analog applications (MCU, consumer, memory controller, automotive, etc.)



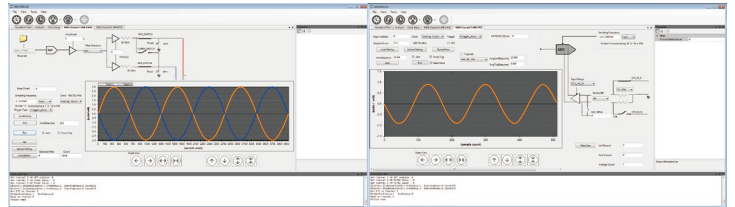
Key Features

- 250MHz high speed clock rate (4ns cycle rate)
- All-in-one digital board (Digital+DPS+GPMU+TMU+HV)
 - GPMU uses floating ground which can be connected in series to provide high voltage
 - GPMU's voltage accuracy is up to 0.5mV which can meet various test requirements
- Up to +42V of Force/Measure VI



Product Advantages

- Optimum mass production configuration, three tester models can be selected according to demand :
 - SP2500-Q (3-slot) / SP2500-H (5-slot) / SP2500-A (9-slot)
 - Compatible with many other testers load-board & probe-card
- Independent board architecture can improve test efficiency and optimize test time
- The most common C++ programming environment and easy-to-use graphical debugging tools



DIGI	DPSI
<ul style="list-style-type: none"> ● 128 digital channels (1 slot), max. up to 1152 digital channels (9 slot) ● 250MHz clock rate, support free run clock ● 8 DPS + 8 GPMU + 8 TMU + 8 HV (per slot) ● DPS : 1A per channel, can be connected to 8A ● Vector depth : 128M, SCAN depth : 4G, Capture memory depth : 64M ● EPA : ±200ps, EPR : 78ps ● GPMU accuracy : 0.01%+0.5mV (4 wire connection) 	<ul style="list-style-type: none"> ● 64 channels of device power supply (per slot) ● 4 wire connection/per channel ● 0.5V ~ 3V@1A ● -3V ~ 8V@0.5A ● Channels can be ganged up to max. 64A
MIXI	MVPI
<ul style="list-style-type: none"> ● 4 channels of HS AWG 400Msps/16 bits ● 4 channels of HS DIG 125Msps/16 bits ● 4 channels of HR AWG 1Msps/24 bits ● 4 channels of HR DIG 216Ksps/24 bits 	<ul style="list-style-type: none"> ● 32 channels of VI force/measure (per slot) ● -1V ~ +42V@±100mA ● -10V ~ +15V@±250mA

